

ENCHANT. ENCOURAGE. ENLIGHTEN.

WONDERFUL.



[www.whitemanpark.com](http://www.whitemanpark.com)



WHITEMAN PARK  
RECREATION & CONSERVATION RESERVE



## Whiteman Wallaby Environmental Education Programs

### Growing Brilliantly with BOB Sc S+E E V

Students will encounter the magic of the Children's Forest as we take them on a wonderful adventure deep into the heart of this special place.

They will meet the 'Boy of the Bush' (BOB), learn about the elements which make up the Forest, and discover the importance of caring for the natural environment.

Each child will receive their own seeds to take home!  
> Suitable for Years K – 2 \*

### Botanical BOB Sc S+E E V

Students will enjoy the spectacular beauty of Whiteman Park's natural environment, and learn about the importance of conservation. They will understand that there are many different ecosystems which support various plant and animal life.

Each child will also receive their own seeds to take home!  
> Suitable for Years 3 & 4 \*

### BOB's Bush Treasure Sc S+E E V

This program teaches students about the native flora and fauna at Whiteman Park, and the important role the Park plays as a conservation reserve.

They will explore the concept of conservation and what they can do to help take care of the environment.

Students follow the clues and answer the riddles to find the treasure hidden in the Children's Forest.  
> Suitable for Years 5 – 7 \*

### Flying High Sc S+E E V

Our unique Birds of Prey Flying Display is the only place in Perth where your students can be inspired and amazed by nature's top predators - owls, kites, falcons and hawks - as they fly around in their natural environment.

Flying High is a 45-minute show aimed at introducing students to the conservation needs of our birds of prey.  
> Suitable for Years K – 7

### Mighty Macroinvertebrates Sc S+E E V

Delve into the amazing world of macroinvertebrates!

Students will study the features of these tiny creatures and discover why they are such an important part of our ecosystem.

They will learn about how water conservation is critical for the survival of macroinvertebrates.  
> Suitable for Years 4 – 7 \*

### Racing Rapid Raptors Sc S+E E V

Students get up close and personal with some fascinating raptors, and participate in interactive raptor themed activities.

They will explore food chains, and learn about the conservation and rehabilitation of these wonderful creatures.  
> Suitable for Years K – 7

### Snakes Alive Sc E V

Students will understand and observe the amazing variety of reptiles that live in Western Australia, and have the opportunity to handle a live snake - if they dare!  
> Suitable for Years K – 12

### Super Natural Elements Sc S+E E V

Your students will:



**Earth** | develop their knowledge and understandings of the interrelation between all elements in the natural environment.



**Fire** | investigate fire as an essential element, and learn about the positive and negative effects fire can have on the natural environment.



**Life** | observe and interact with some fascinating friends of the forest. Get up close and personal with some native and non-native animals.



**Water** | explore the importance of water as a natural resource and learn about water conservation, and the Gngarara Water Mound.



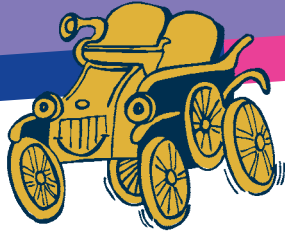
**Wind** | discover the power of wind as a natural force and the important role it plays in supporting life on earth.

> Suitable for Years K – 7

### Touch the Wild (self-guided) Sc S+E E V

A popular excursion that combines a visit to explore Caversham Wildlife Park - home to many of Australia's native fauna, the very Australian 'Farm Show', farmyard animals and bird species - with the great picnic and recreational facilities of Whiteman Park.

> Suitable for Years K – 12



## Wheels of Change Transport Heritage Education Programs

### Legs and Loads - The Story of the Horse and Buggy **S+E E V**

Engage your students with stories of the past as they discover how children would have travelled to school one hundred years ago using a horse and buggy. Students will explore how transport changes over time, different modes of transport and the important role transport plays in every day life.  
> Suitable for Years K - 3

### Legs and Loads - Passenger Puzzles **S+E E V**

Students will be encouraged to expand their knowledge and understandings of how land transport has changed over the years. They will compare and contrast older modes of passenger transport with more modern ones focussing on the impact of design improvements. Students will have the opportunity to design their own bus.  
> Suitable for Years 3 - 5

### Legs and Loads - Balancing the Load **S+E E V**

Students investigate some of the revolutions in land transport. They identify how a 19th century journey with a pack-horse is similar to a long distance bike ride in the 21st century. They are required to imagine they are surveyors in the year 1855 and have been chosen to head to Kojonup to survey some land. They must consider how to pack their bags to ensure balance and self-reliance.  
> Suitable for Years 5 - 7

### Motorvation **S+E E V**

From horse drawn carts to the modern day car, students can see the development of transport over time at the Motor Museum of Western Australia.  
> Suitable for Years 3 - 7

### Tractor Factor **S+E E V**

A tailor-made tour of the Tractor Museum where students see, hear and smell the machinery that played such an important part in the early life of Western Australia.  
> Suitable for Years K - 12

\* Program can be tailored to suit other year groups.

#### Key

<b>Sc</b>	Science
<b>S+E</b>	Society and Environment
<b>A</b>	The Arts
<b>E</b>	English
<b>LOTE</b>	Languages Other Than English
<b>V</b>	Values

## 2011 Special Events

### Enviro Week at Whiteman Park Wondrous Wetlands & Forestry Fun) 14 - 18 March **Sc S+E E V**

Whiteman Park invites you and your students to spend a day being immersed in the magic and beauty of nature. Throughout the day, students will rotate through a series of interactive, hands-on activities covering key environmental topics such as conservation, biodiversity, interdependence of life, groundwater, ecosystems, wetlands, sustainability and food chains.  
> Suitable for Years K - 7

### Threatened Species Day Wednesday 7 September **Sc S+E E V**

National Threatened Species Day is held on 7 September each year commemorating the death of the last Tasmanian tiger at Hobart Zoo in 1936. Students will develop a greater awareness and understanding of threatened species as they rotate through a series of workshops covering:

- what threatens the continuation of species;
- why extinction is a problem;
- what they can do to help save threatened species;
- how extinctions can be prevented; and
- specific government funded projects that are in place at the present time to prevent extinctions from occurring.

> Suitable for Years 4 - 12

### Transport Week at Whiteman Park Wheels of Change **Sc S+E E V**

All aboard for an incredible journey of transport discovery! Students are invited to step back in time and discover how transport has revolutionised over the years as they engage in a series of interactive activities exploring:

- the features of different types of transport;
- how transport has changed over time;
- the role transport plays in everyday life;
- energy requirements for different modes of transport;
- transport and sustainability;
- the impact different types of transport have on the natural environment; and
- road safety.

> Suitable for Years Pre-Primary - 7

#### Booking Information

For further information or to make a booking, please contact our Bookings Officer on 9209 6000 or email [bookings@whitemanpark.com](mailto:bookings@whitemanpark.com).



## Other Opportunities and Events

### **Children's Groundwater Festival**

Imagine building an aquifer out of ice-cream and then eating the result!

This is just one of the innovative activities that up to 1,200 school children are able to take part in each year at Whiteman Park's annual Children's Groundwater Festival.

It is the flagship of Whiteman Park's environmental education programs and the only festival of its kind in Australia.

The aim of the festival is to inspire students to learn more about groundwater and other related environmental topics, through participating in a number of dynamic, 'hands-on' activities.

Each activity is designed to increase students' awareness, knowledge and understanding of groundwater issues and promote environmental stewardship by linking learning about the natural environment with excitement and fun.

This day-long event provides a unique opportunity for West Australian primary students in Years 4, 5, 6 and 7 to come together in the same place, on the same day to learn more about our precious groundwater resources at a time when understanding of groundwater has never been more topical.

### **Teacher Familiarisations**

Whiteman Park offers free familiarisation sessions for teachers.

A Whiteman Park staff member can come out to your school to inform teachers of the programs we have available, and to show off the fantastic resources we have for those teachers who book an excursion to the Park. These free familiarisation sessions can take as little or as much time as you like.

An average session is 15 to 20 minutes long - perfect for just before school or at the end of a staff meeting!

### **Tree Planting**

**Available: Mid-Term 2 to Mid-Term 3**

Opportunities exist for schools with an interest in the environment to assist with our annual planting program.

Groups can help the revegetation efforts of Whiteman Park's conservation team, with weeding and planting in key areas of the Park.

To be eligible for a tree-planting excursion, carer numbers need to be higher than usual, especially for younger year groups, and buses must be able to transport students to different areas within the Park.

Tree-planting is conducted in all but extreme weather.

### **Contact Us**

For more information about Whiteman Park's Education Programs you can download a more detailed program outline at [www.whitemanpark.com](http://www.whitemanpark.com)

For other enquiries, or to make a booking, please contact the Bookings Officer on 9209 6000.

To receive monthly updates about new and exciting education opportunities you can subscribe to our newsletter by logging on to our website and clicking on 'Contact Us'.